

New from Knight Industries: Low Profile Lift Tables

With a collapsed height of nearly half our standard table the low profile table is able to accommodate a wider range of operator heights.

Low Profile Lift Table - LPL4353-6000

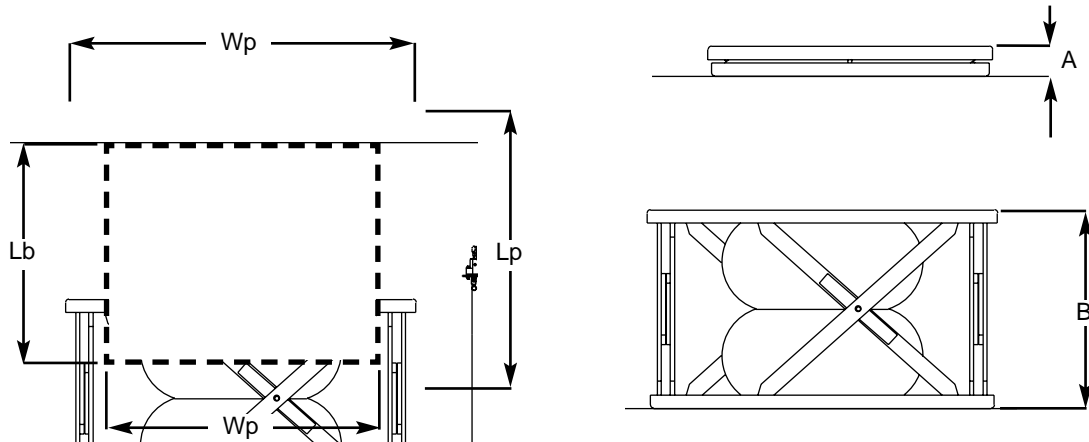
- Platform Size
43" x 53" [1092 mm x 1346 mm] to
56" x 60" [1422 mm x 1524 mm]
- Base Size
42" x 52" [1067 mm x 1321 mm]
- Closed Height 4.5" [114 mm]
- Extended Height 30" [762 mm]
- 6000 lb [2722 kg] Capacity

Available Options:

- Lock-out Valves
- Bellows sSkirting
- Corner Gusset Tabs

Control Options:

- Free Standing Pedestal Control
- Foot Control



Model	Capacity Lbs [kg]	Closed A in [mm]	Extended B in [mm]	Platform Size (Wp x Lp) in [mm]	Base Size (Wb x Lb) in [mm]
LPL4353-6000	6000 [2722]	4.5 [114]	30 [762]	43" x 53" [1092 mm x 1346 mm] to 56" x 60" [1422 mm x 1524 mm]	42" x 52" [1067 mm x 1321 mm]



Knight Industries

Low Profile Lift & Rotate Table - LPLR4353-6000

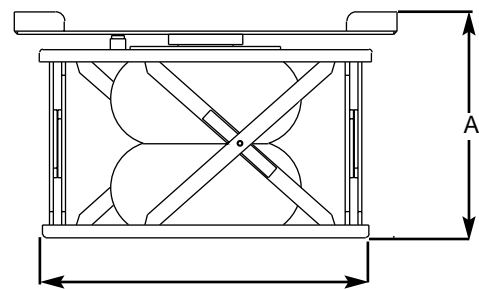
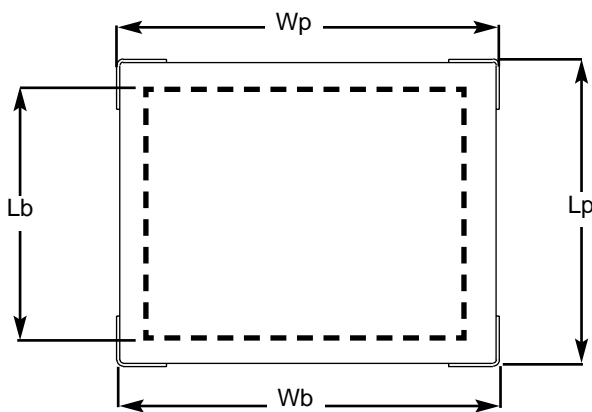
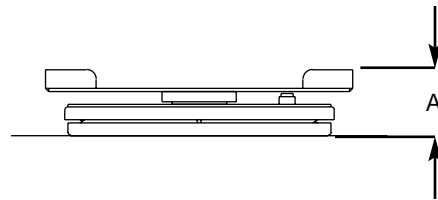
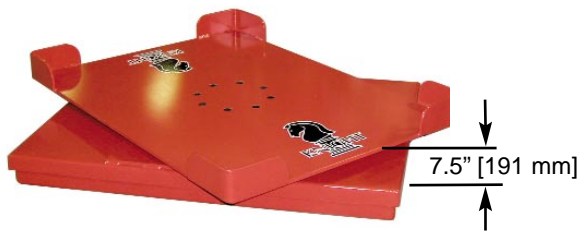
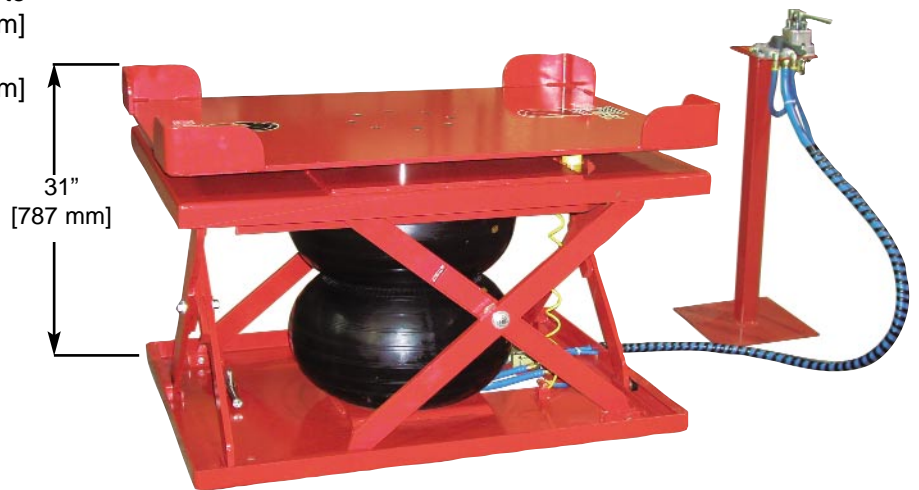
- Rotate Plate Size
38" x 38" [965 mm x 965 mm] to
56" x 60" [1422 mm x 1524 mm]
- Minimum Base Size
42" x 52" [1067 mm x 1321 mm]
- Closed Height 7.5" [191 mm]
- Extended Height 30" [762 mm]
- 6000 lb [2722 kg] Capacity

Available Options:

- Lock-out Valves
- Bellows Skirting
- Corner Gusset Tabs

Control Options:

- Free Standing Pedestal Control
- Foot Control



Model	Capacity Lbs [kg]	Closed A in [mm]	Extended B in [mm]	Platform Size (Wp x Lp) in [mm]	Base Size (Wb x Lb) in [mm]
LPLR4353-6000	6000 [2722]	7.5 [191]	30 [762]	38" x 38" [965 mm x 965 mm] to 56" x 60" [1422 mm x 1524 mm]	42" x 52" [1067 mm x 1321 mm]

Knight Industries

1140 Center Road Auburn Hills MI 48326 Phone (248) 377-4950 Fax (248) 377-2135

www.knight-ind.com